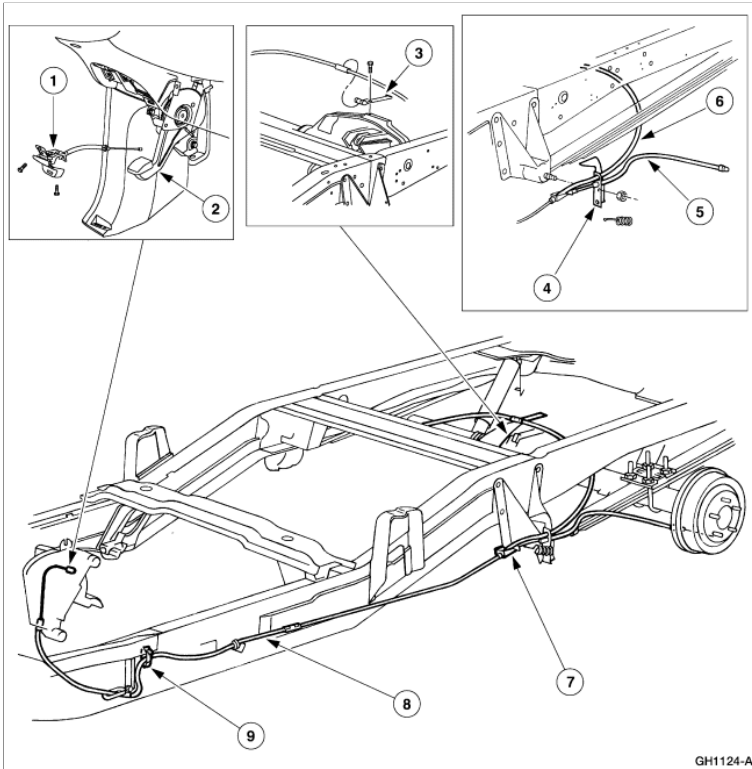


Parking Brake

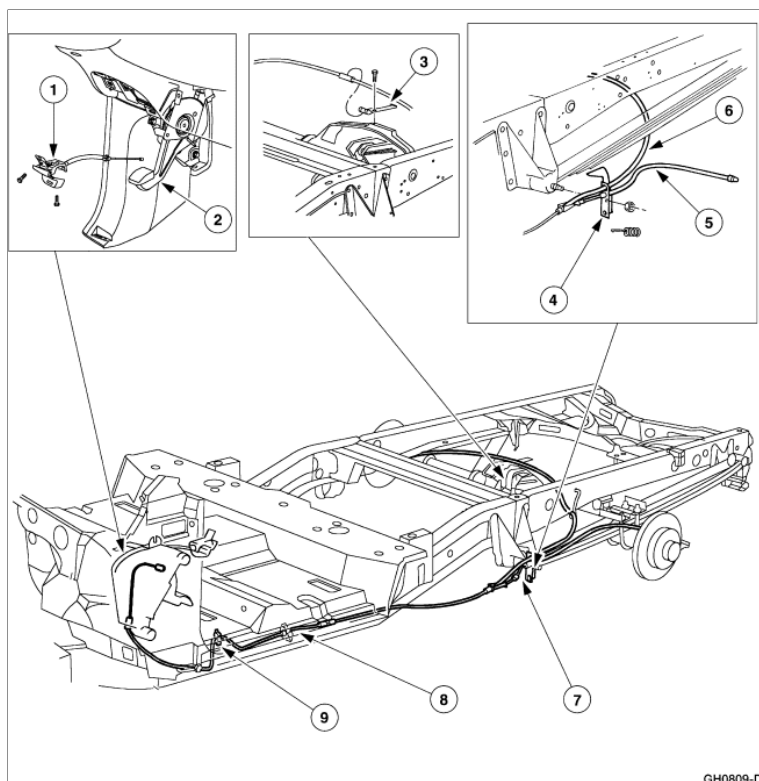
Parking Brake, Rear Drum Brakes



GH1124-A

Item	Part Number	Description
1	2783	Remote release handle
2	2780	Parking brake control
3	—	Parking brake rear cable and conduit clip (part of 2A635)
4	2530	Parking brake cable bracket
5	2A635	Parking brake rear cable and conduit— (LH)
6	2A635	Parking brake rear cable and conduit— (RH)
7	2A602	Parking brake cable equalizer
8	2853	Front parking brake cable and conduit
9	—	Front parking brake cable clip

Parking Brake, Four Wheel Disc

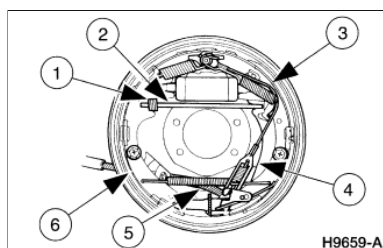


GH0809-D

Item	Part Number	Description
1	2783	Parking brake control release handle and cable
2	2780	Parking brake control
3	—	Parking brake rear cable and conduit clip (part of 2A635)
4	2530	Parking brake cable bracket
5	2A635	Parking brake rear cable and conduit— (LH)
6	2A635	Parking brake rear cable and conduit— (RH)
7	2A602	Parking brake cable equalizer
8	2853	Front parking brake cable and conduit
9	—	Front parking brake cable/clip

Rear Drum Brakes

Drum Brake Components



H9659-A

Item	Part Number	Description
1	2A601	Parking brake link spring
2	2A642	Primary brake shoe parking brake lever link
3	2200	Rear brake shoe and lining— (secondary)
4	2A637	Parking brake lever
5	2A635	Parking brake rear cable and conduit
6	2200	Rear brake shoe and lining— (primary)

The parking brake system is actuated when the parking brake control (2780) is depressed. The parking brake control applies tension to the front parking brake cable and conduit (2853) and parking brake cable equalizer (2A602). The parking brake cable equalizer is coupled to the RH parking brake rear cable and conduit (2A635) and the LH parking brake rear cable and conduit. The respective rear brake assemblies are then applied.

The rear wheel brake assembly contains a cable-actuated parking brake assembly.

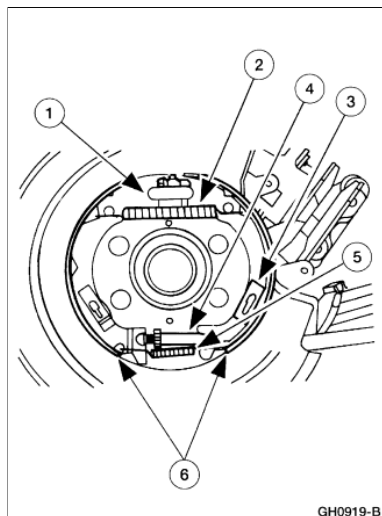
The parking brake releases the rear brakes using a remote release lever incorporated with the parking brake control. If the parking brake control is not fully released, the parking brake signal switch will illuminate the brake warning light.

The parking brake signal switch is mounted on the parking brake control. The switch is held in place by a self-tapping screw and aligned with a locator pin.

The drum brake parking brake system is self-adjusting, therefore cable tension does not need to be adjusted.

Rear Disc Brakes

Parking Brake Components, Rear Disc Brakes



Item	Part Number	Description
1	2A637	Parking brake lever
2	2296	Brake shoe retracting spring
3	2068	Brake shoe hold-down spring
4	2041	Brake adjuster screw
5	2049	Brake shoe adjusting screw spring
6	2200	Rear brake shoe and lining

The parking brake system is actuated when the parking brake control is depressed. The parking brake control applies tension to the front parking brake cable and conduit and parking brake cable equalizer. The parking brake cable equalizer is coupled to the RH parking brake rear cable and conduit and the LH parking brake rear cable and conduit. The respective rear brake assemblies are then applied.

The rear wheel brake disc assembly contains a cable actuated parking brake assembly.

If the parking brake control is not fully released, the parking brake signal switch will illuminate the brake warning light.

The parking brake signal switch is mounted on the parking brake control. The switch is held in place by a self-tapping screw and aligned with a locator pin.

The brake disc parking brake system is not self-adjusting. Therefore cable tension may need to be adjusted.